

MONDAY



WEEKLY EQUITY REPORT

11 FEB 2019 TO 15 FEB 2019

**BULL
MARKET**



Indira Securities Pvt. Ltd.

www.indiratrade.com



TOP STORIES THIS WEEK

- On the political front, developments in the budget session of parliament will be closely watched. The last Parliament session of the Narendra Modi government - the budget session - began on 31 January 2019. The session will go on till February 13.
- On the global front, China's inflation data for January will be announced on 15 February 2019. Japan's industrial production data for December will be announced on 15 February 2019. US Retail Sales for December will be declared on 14 February 2019.
- On the macro front, India's industrial production data for December 2018 will be unveiled on 12 February 2019. India's industrial production growth slowed sharply to 0.5% year-on-year in November 2018 from an upwardly revised 11-month high of 8.4% in the previous month.
- Among corporate earnings, Eicher Motors will announce October-December 2018 quarterly results on 11 February 2019. Coal India, Hindalco Industries and Sun Pharmaceuticals Industries will declare their October-December 2018 quarterly results on 12 February 2019. Bosch and ONGC will unveil their October-December 2018 quarterly results on 14 February 2019.
- Corporate earnings, domestic and global macroeconomic data, trend in global markets, the movement of rupee against the dollar and crude oil price movement will dictate trend on the bourses in the near term. Investment by foreign portfolio investors (FPIs) and domestic institutional investors (DIIs) will also be monitored.

WEEKLY INDICES

INDEX	CLOSE	PREV. CLOSE	CHANGE %
SENSEX	36546.48	36469.43	0.21%
NIFTY	10943.6	10893.7	0.46%
MIDCAP	14328.81	14641.38	-2.13%
SMLCAP	13656.75	13950.45	-2.11%
METAL	10266.29	10542.63	-2.62%
OIL&GAS	13649.17	13633.78	0.11%
AUTO	18943.57	18985.17	-0.22%
TECK	7711.53	7585.37	1.66%
BANKEX	30546.58	30412.15	0.44%
IT	15624.07	15433.98	1.23%
FMCG	11582.21	11748.28	-1.41%
HC	13982.94	13997.3	-0.10%
PSU	6678.97	6846.55	-2.45%
CD	21654.96	21412.99	1.13%
POWER	1781.58	1887.82	-5.63%
CG	16846.83	17462.98	-3.53%
REALTY	1768.66	1797.76	-1.62%

GLOBAL INDICES CHANGES

INDEX	CLOSE	PREV. CLOSE	CHANGE %
DOW	25106.3	25063.9	0.17%
NASDAQ	7298.2	7263.87	0.47%
FTSE	7071.18	7020.22	0.73%
NIKKEI	20333.2	20788.4	-2.19%
HANGSENG	28005	27930.7	0.27%

TOP GAINERS WEEKLY

SCRIPT	PRICE	CHANGE %
Dish TV India Ltd.	29.85	27.56
Manpasand Beverage	85.1	25.7
Reliance NipLife AML	163.3	24.37
GRUH Finance Li	245.8	18
Zee Entertainment En	399.35	14.59

TOP LOSERS WEEKLY

SCRIPT	PRICE	CHANGE %
Reliance Infrastruct	118.05	-48.05
Reliance Power L	10.9	-36.26
Reliance Com	5.44	-27.95
Suzlon Energy Ltd.	3.7	-21.78
Reliance Naval	8.24	-18.25

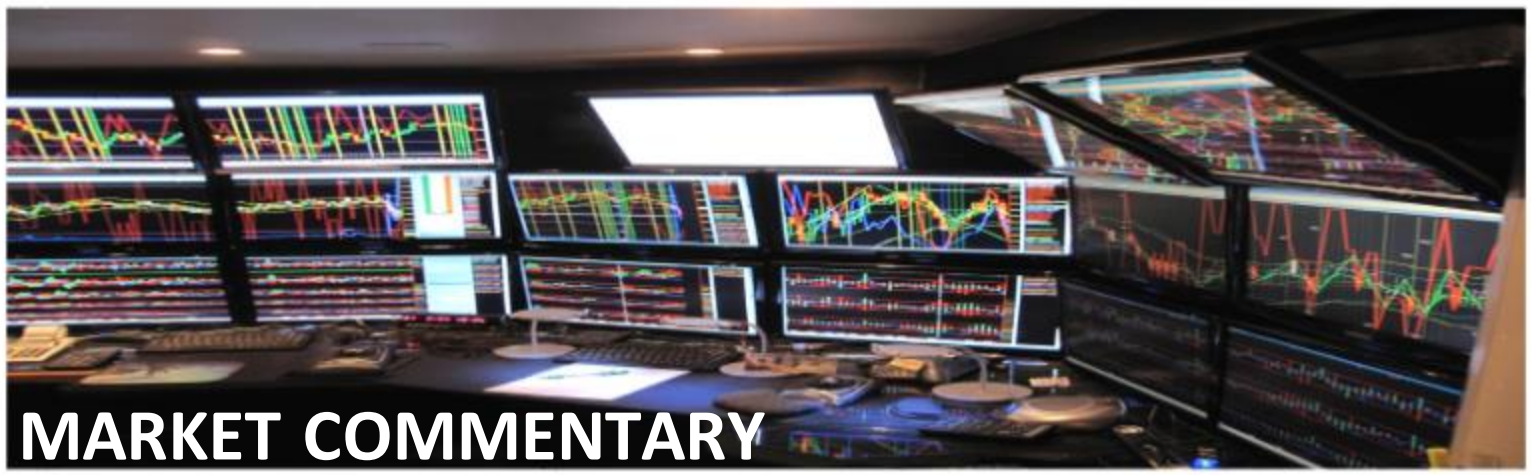


SUPPORT AND RESISTANCE

S3	S2	S1	Nifty	R1	R2	R3
10257	10420	10657	10820	11056	11220	11456

MOVING AVERAGE

MA20	MA50	MA100	MA200
10671	10775	10365	9269



In the week ended Friday, 8 February 2019, the Sensex rose 77.05 points or 0.21% to settle at 36,546.48, its lowest closing level since 1 February 2019. The Nifty 50 index rose 49.95 points or 0.46% to settle at 10,943.60, its lowest closing level since 5 February 2019.

The BSE Mid-Cap index fell 312.57 points or 2.13% to settle at 14,328.81. The BSE Small-Cap index fell 293.70 points or 2.11% to settle at 13,656.75.

Nifty likely to trade in the range between 10250-11450

STOCK AT 52 WEEK HIGH

SCRIPT	CMP
Infosys	759.85
Wipro	372.40
Titan Company	1,053.90
Tech Mahindra	803.55
Divis Lab	1,685.85

STOCK AT 52 WEEK LOW

SCRIPT	CMP
NTPC	132.00
JSW Steel	262.55
Vedanta	154.05
Motherson Sumi	135.05
General Insuranc	231.70

FII ACTIVITY

DATE	FIGURES IN CRORE
04/02	-112
05/02	421
06/02	695
07/02	418
08/02	844
NET	+2265.23

DII ACTIVITY

DATE	FIGURES IN CRORE
04/02	-65
05/02	194
06/02	525
07/02	294
08/02	-960
NET	-11.58

WEEKLY STOCK IDEA

SCRIPT	B/S	CMP	TARGET
JBCHEM	B	328	348
KOTAKBANK	B	1298	1360
NIITECH	B	1318	1360
PIDILITE	B	1160	1205
SBIN	B	283	312

VOLUME BREAKOUT STOCKS

SCRIPT	CMP
Manpasand Beverages	85.1
Inox Wind	65.5
Reliance Infra	118.05
Bharti Infratel	324.95
Shipping Corpn.	39.6

Buy on dips & Sell on rise with Stop-loss of 3%



WOMEN Desk



204 Amardarshan Building 3rd floor Saket Nagar , Indore-452018

Call: 0731-4797170-173 **Mob:** +91-9303172345 / **Toll Free:** 18001030059 / **SMS:** <INDIRA> to 56070

DISCLAIMER

This report is for private circulation within the Indira Group. This report is strictly confidential and for information of the selected recipient only and may not be altered in any way, transmitted to, copied or distributed, in part or in whole, to any other person or to the media or reproduced in any form. This report should not be construed as an offer or solicitation to buy or sell any securities or any interest in securities. It does not constitute a personal recommendation or take into account the particular investment objectives, financial situations, or any such factor. The information, opinions estimates and forecasts contained here have been obtained from, or are based upon, sources we believe to be reliable, but no representation of warranty, express or implied, is made by us to their accuracy or completeness. Opinions expressed are our current opinions as of our current opinions as of the data appearing on this material only and are subject to change without notice.